



Data Sheet

PowerPark II

Extendable Solar Power Structure



Description

A 40' wide, extendable power shelter designed to shade two rows of cars. The structure is cantilevered out from a single row of center columns so there are no obstructions for vehicular circulation. The smallest configuration uses 8 - 10'x20' power frames supported by a single center column and covers a 40' by 40' area over 8 parking spaces. Larger configurations of PowerParks can cover over hundreds or thousands of parking spaces.

Applications

Existing and new urban, government and commercial parking lots. Covered walkways, public areas, events, carports.

Complete PowerPark Kit Includes:

Supporting Structure	Steel supporting structure, columns, perimeter frames, masts and braces and rigging hardware.
PV Array	The solar array is comprised of wide strips of Uni-Solar PV flexible panels which are tensioned to a perimeter frame.
Battery Bank	Stores solar energy created for later use. Commercially available batteries, and lightweight, high efficiency batteries can be supplied.
Charge Controller	Ensure battery is not overcharged or drained.
Inverter	Converts DC power into AC power.
Circuit Box, Cabling and Plugs	Set-up for feeding power back to the grid or battery bank.

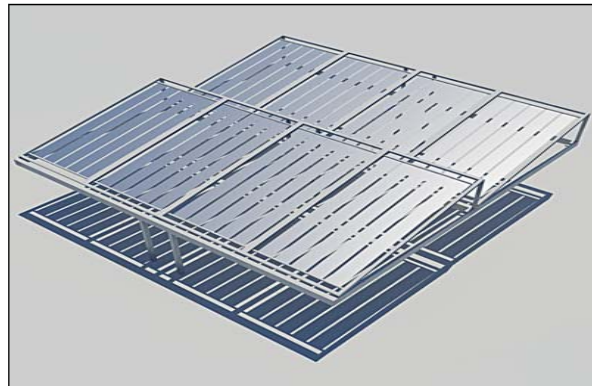
Energy Produced

Each of the 8 - 10'x20' power frames produces 680 watts of power. Daily energy created can be calculated using 5.0 hours of sunlight (Standard Test Conditions) and a total electrical system efficiency of 75%. The basic PowerPark configuration contains 8 power frames; therefore each structure yields **20.4 kWh per day**.

A parking structure consisting of 100 PowerParks would produce **2,040 kWh per day**.

Benefits

- The solar array of flexible PV fabric panels are tensioned to a perimeter frame.
- Battery bank helps store solar energy created for later use.
- Circuit box, cabling and plugs are set up for feeding power back into the grid.



Pricing Available on Request

For more information please contact info@ftlsolar.com