



Data Sheet

PowerPark I (Patent Pending)

Tensile Structure with Integrated Solar Power



Description

A 40' wide, extendable shelter designed to shade two rows of cars. The structure is cantilevered out from a single row of center columns so there are no obstructions for vehicular circulation. The smallest configuration uses 4 - 20'x20' PowerMods supported by a single center column and covers a 40' by 40' area over 8 parking spaces. Larger configurations of PowerMods can cover over hundreds or thousands of parking spaces.

Applications

Existing and new urban, government and commercial parking lots.
Covered walkways, public areas, events, carports.

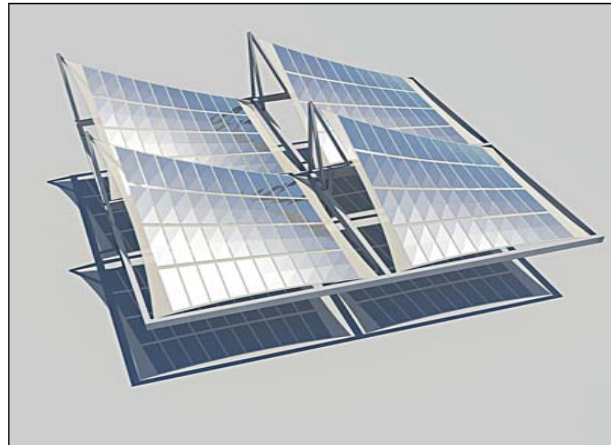
Energy Produced

Each of the 4 - 20'x20' PowerMods produces 1,100 watts of power. Daily energy created can be calculated using 5.0 hours of sunlight (Standard Test Conditions) and a total electricity system efficiency factor of 75%. The basic PowerPark configuration contains 4 - 20'x20' PowerMods; therefore each structures yields 16.5 kWh per day.

A parking structure consisting of 100 PowerParks would produce 1,650 kWh per day.

Benefits

- Solar array is built into the tensile structure.
- Battery bank helps store solar energy created for later use.
- Circuit box, cabling and plugs are set up for feeding power back into the grid.



Complete PowerPark Kit Includes:

Supporting Structure	Steel supporting structure, columns, perimeter frames, masts, braces, and rigging hardware.
PV Array	Power Film's amorphous silicon PV modules are integrated into a durable, flexible, structural fabric. The modules are wired in parallel at 24V.
Battery Bank	Stores solar energy created for later use. Commercially available batteries, and lightweight, high efficiency batteries can be supplied.
Charge Controller	Ensures battery is not overcharged or drained.
Inverter	Converts DC power into AC power.
Circuit Box, Cabling and Plugs	Set-up for feeding power into the grid or battery bank.

Pricing Available on Request

For more information please contact info@ftlsolar.com